

Master Architecture Typology

**ANNOTATED COURSE CATALOGUE
SUSE 2024**

Institut für Architektur
Fakultät VI
TU Berlin
Straße des 17. Juni 152
10623 Berlin

Julius Funke,
Hendrik Schultz
28.03.2024

General Information

Course Presentation & Open Studios
Course Selection and Exam Registration
Further Information
Study Plan

Course Offerings

Compulsory Courses
Compulsory Optional Courses
Optional Courses

**IFA INTRO
ON 09.04.2024
AT 10:00
IN A053**

10:00 – 11:00	WHY ARCHITECTURE? WHY TEACHING? WHY ME? NEW PROFESSORS ON STAGE Sandra Bartoli, Nicole Berganski, Nanni Grau, Daniel Korwan Anupama Kundoo, Silvan Linden, Antoine Vialle
11:00 – 11:10	UNIVERSITY CO-OPERATIONS
11:00 - 11:05	DUAL DEGREE PONTIFICIA UNIVERSIDAD CATÓLICA DE CHILE Prof. Pasel
11:05 - 11:10	DUAL DEGREE TSINGHUA UNIVERSITY IN CHINA Melanie Nguyen
11:10 – 11:35	INITIATIVES AND FACILITIES
11:10 – 11:15	WORKSHOPS
11:15 – 11:20	COMPUTER POOL
11:20 - 11:25	PROJEKTGRUPPE NACHHALTIGES BAUEN
11:25 – 11:30	ROUNDAABOUT E.V.
11:30 – 11:35	IFA KOLLEKTIV
11:35 – 11:45	ifa EXPO 2024

12:30 – 13:20	DESIGN STUDIOS
12:30 - 12:35	HOW WILL WE WORK AND LIVE TOGETHER? Gebäudetechnik und Entwerfen DS I
12:35 - 12:40	BRICK BY BRICK? Architektur und Entwurfsmethoden DS I
12:40 - 12:45	TO BUILD OR NOT TO BUILD Entwerfen und Gebäudekunde DS I
12:45 - 12:50	MUR À PÊCHES Architektonische und urbane Typologien DS I
12:50 - 12:55	SPECTRAL NATURES Habitat Unit DS I
12:55 - 13:00	INSURGENT DESIGN Habitat Unit DS I
13:00 - 13:05	SECTOR-COUPPLING LIVING LABS Habitat Unit DS I
13:05 - 13:10	HYRDOPOLITICAL (HI)STORIES CUD DS I
13:10 - 13:15	D.I.Y. PARADIGM SHIFT CUD DS I
13:15 - 13:20	ADLERSHOF SOIL FUTURES CUE – Chair of Transitioning Urban Ecosystems DS I

OPEN STUDIOS ON 10.04.2023

09:00 - 11:00	OPEN OFFICE QUESTIONS ABOUT THE SEMESTER START? Student Advisory Service & Programme Coordination A009
11:00 - 12:00	OPEN STUDIO HOW WILL WE WORK AND LIVE TOGETHER? Gebäudetechnik und Entwerfen A205
13:00 - 14:00	OPEN STUDIO BRICK BY BRICK? Architektur und Entwurfsmethoden A403
14:00 - 15:00	OPEN STUDIO TO BUILD OR NOT TO BUILD Entwerfen und Gebäudekunde A513
15:00 - 16:00	OPEN STUDIO HYRDOPOLITICAL (HI)STORIES D.I.Y. PARADIGM SHIFT CUD A115/816
16:00 - 17:00	OPEN STUDIO SPECTRAL NATURES INSURGENT DESIGN SECTOR-COUPLING LIVING LABS Habitat Unit A202

OPEN STUDIOS ON 11.04.2023

09:00 - 11:00	OPEN OFFICE QUESTIONS ABOUT THE SEMESTER START? Student Advisory Service & Programme Coordination A009
13:00 - 14:00	OPEN STUDIO ADLERSHOF SOIL FUTURES CUE – Chair of Transitioning Urban Ecosystems A815
14:00 - 15:00	OPEN STUDIO MUR À PÊCHES Architektonische und urbane Typologien A814

Registration for Exams

The Moses-Portal (MTS) is used for the registration of exams. You can use the MTS to register for compulsory, compulsory optional and free optional modules. For offered modules, registration deadlines and dates are announced there and the examination performances are recorded.

QISPOS offers the possibility to view one's own transcript of records. The Moses portal and QISPOS can be accessed via the main page in TuPort.

However, the organization of exam registration is the responsibility of the respective department and it may differ from the standard procedure. Further information will be explained in the first session of a course.

TuPort:

<https://tuport.sap.tu-berlin.de/irj/portal/tub#Shell-home>

Registration via MTS:

<https://moseskonto.tu-berlin.de/moses/modultransfersystem/index.html>

Information for the registration via MTS:

<https://www.tu.berlin/studieren/studienorganisation/pruefungen>

Selection and Registration of Courses

1. Design Studio Modules

The selection and distribution of design studios will be done via a polling system on the TU web platform ISIS. To make your selection, please use the link below. This link will take you to the ISIS platform after entering your TU e-mail address and password. You can select three design studios according to your priorities and save your selection (priority 1: I absolutely want to do - priority 3: is ok, too). The selection period for the design studios starts on April 9, 2024, and ends on April 14, 2024. The results will be published on ISIS by April 16, 2024. Soon after, the chairs will contact you to confirm your participation and provide details about the exam registration process.

Selection:

<https://isis.tu-berlin.de/course/view.php?id=38038>

2. Other Compulsory and Compulsory Optional Courses

For all other compulsory and compulsory optional courses, please contact the chairs and express your interest in participating. All courses are listed with links to appropriate websites.

If you have any questions, please contact the student advisory service:

<https://www.tu.berlin/en/planen-bauen-umwelt/architektur/course-guidance>

Further Information

Further information about the study program, such as the organization of the study program, semesters abroad, internship guidelines, the study and examination regulations and contact persons can be found on the study program website:

<https://www.tu.berlin/en/planen-bauen-umwelt/architektur/architecture-typology-msc>

If you have any further questions, please do not hesitate to contact the Student Advisory Service:

<https://www.tu.berlin/en/planen-bauen-umwelt/architektur/course-guidance>

Semester	1	2	3	4	
Compulsory Modules				84	
	CP	CP	CP	CP	
Typology Design Studio	15	Design Studio 1	15	Design Studio 2	15
Typology Design Studio	12	Design Studio 1	12	Design Studio 2	12
Typology Design Studio - PiV	3	Design Studio 1 - PiV	3	Design Studio 2 - PiV	3
Type and Model	6	Types and Translation	6	Master Thesis	18
Type and Model I	3	Types and Translation	6	Master Thesis	18
Type and Model II	3			Master Colloquium	3
				Master Colloquium	3
Scales and Methodology	6				
Scales and Methodology I	3	Scales and Methodology II	3		
Compulsory Optional Modules				24	
	6	6	6	6	
Optional Modules				12	
			9	3	
Overall				120	
	30	30	30	30	

Click blue to navigate

Compulsory Modules

Design Studios

Fundamental Modules

Compulsory Optional Modules

Optional Modules

Mur à Pêches

Module	Design Studio 1	15 CP
Module Component	Typology Design Studio	12 CP
Chair Supervisor	Gebäudekunde und Entwerfen Zorica Medo	
Language	English, German	
Participants	8	
Place	A814	
Time	tba	
First Session	tba	
Registration	https://isis.tu-berlin.de/course/view.php?id=38038	
Website	www.tu.berlin/ia	

Mur à Pêches (PiV)

Module	Design Studio 1	15 CP
Module Component	Typology Design Studio - PIV	3 CP
Chair Supervisor	tba tba	
Language	English, German	
Participants	22	
Place	tba	
Time	tba	
First Session	tba	
Registration	tba	
Website	tba	

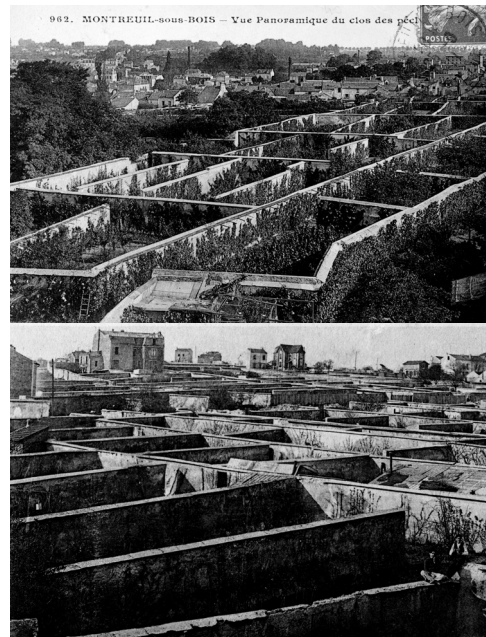
Mur à Pêches

Das Projekt behandelt ein ehemaliges Obstanbaugebiet in Montreuil in der Banlieue von Paris. Das Gebiet ist auch heute noch von einem Netz von Fruchtmauern geprägt, die für den Anbau von Pfirsichen genutzt wurden – den sogenannten Murs à Pêches.

Das Areal ist in Teilen geschützte Frei- und Gartenfläche, in Teilen Gewerbestandort, in Teilen Wohngebiet, in Teilen Bauerwartungsland ... Sitz verschiedener Bürgerinitiativen und Vereine, Schulgarten, Müllabladefläche, Veranstaltungsort eines jährlich stattfindenden Festivals, Standort einer Anlage zur Bodendekontamination etc.

Thema der Entwürfe ist neben dem Ort und seiner spezifischen Geschichte die Zielsetzung einer regionalen Kreislaufwirtschaft und schließlich die Mauer bzw. Einfriedung als „Proto-Architektur“.

Das Entwurfsprojekt wird begleitet von einer (freiwilligen) Exkursion, die ebenso den Ort und seine Akteure, den Stoffkreislauf der Stadt Paris und die gartenbautechnische Entstehung der Murs à Pêches in den Fokus nehmen will.



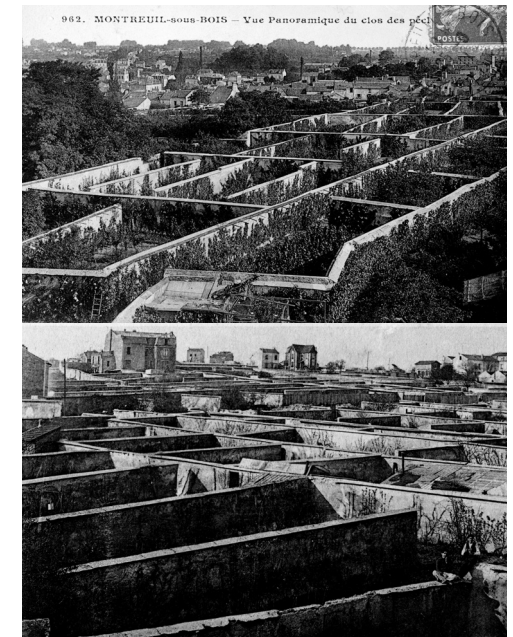
Mur à Pêches

Das Projekt behandelt ein ehemaliges Obstanbaugebiet in Montreuil in der Banlieue von Paris. Das Gebiet ist auch heute noch von einem Netz von Fruchtmauern geprägt, die für den Anbau von Pfirsichen genutzt wurden – den sogenannten Murs à Pêches.

Das Areal ist in Teilen geschützte Frei- und Gartenfläche, in Teilen Gewerbestandort, in Teilen Wohngebiet, in Teilen Bauerwartungsland ... Sitz verschiedener Bürgerinitiativen und Vereine, Schulgarten, Müllabladefläche, Veranstaltungsort eines jährlich stattfindenden Festivals, Standort einer Anlage zur Bodendekontamination etc.

Thema der Entwürfe ist neben dem Ort und seiner spezifischen Geschichte die Zielsetzung einer regionalen Kreislaufwirtschaft und schließlich die Mauer bzw. Einfriedung als „Proto-Architektur“.

Das Entwurfsprojekt wird begleitet von einer (freiwilligen) Exkursion, die ebenso den Ort und seine Akteure, den Stoffkreislauf der Stadt Paris und die gartenbautechnische Entstehung der Murs à Pêches in den Fokus nehmen will.



To build or not to build: Architectural Innovations for Summer Spaces

Module	Design Studio 1	15 CP
Module Component	Typology Design Studio	12 CP
Chair Supervisor	Entwerfen und Gebäudekunde / GP Jan Kampshoff Adela Bravo Sauras, Prof Jan Kampshoff, Maria Hudl, Leander Nowack	
Language	English	
Participants	8	
Place	Studio A513	
Time	Thu.+Fri. 10:00-18:00, lectures tba	
First Session	Thu 18.04.24	
Registration	https://isis.tu-berlin.de/course/view.php?id=38038	
Website	https://fg.vanr.tu-berlin.de	

To build or not to build: Architectural Innovations for Summer Spaces (PiV)

Module	Design Studio 1	15 CP
Module Component	Typology Design Studio - PIV	3 CP
Chair Supervisor	Entwerfen und Gebäudekunde / GP Jan Kampshoff Adela Bravo Sauras, Prof Jan Kampshoff, Maria Hudl, Leander Nowack	
Language	English	
Participants	8	
Place	Studio A513	
Time	Thu.+Fri. 10:00-18:00, lectures tba	
First Session	Thu 18.04.24	
Registration	-	
Website	https://fg.vanr.tu-berlin.de	



TO BUILD OR NOT TO BUILD

During the course „To build or not to build: Architectural Innovations for Summer Spaces“, we'll focus on designing temporary spaces for communities in warm months. Considering closed city theaters and operas, we'll explore creating new pavilions or related facilities.

We will also explore creative ways to use existing spaces, reducing the use of materials.

Visiting diverse event venues, we'll analyze intersections of art, theater, urbanism, and architecture. Examining various architectural typologies like pavilions, temporary architectures, temporary theaters, artistic and performative installations, urban furniture, laboratories, urban interventions and activators, play areas, participatory buildings, devices for collective space utilization, creative workshops, creation spaces, temporary clubs, as well as other social spaces and boundary architectures, students will engage in readings and diagrams, applying what they learn in real locations to establish their own design objectives. We'll also explore archives for sustainable material reuse and learn about obtaining permits for future projects, such as a Design Build course next year.

Acknowledging

Western knowledge systems' influence and colonial legacies' threat to cultural landscapes, we'll delve into the dynamics challenging traditional architectural stability and property concepts amidst crises and conflicts. Throughout, we'll examine impacts on gathering, performing, exhibiting, and participating spaces.



TO BUILD OR NOT TO BUILD - PIV

We will conduct a comprehensive analysis of modes of observation and coexistence, focusing on guided tours of event buildings in Berlin and on the meticulous study of innovative architectural structures.

We will utilize theoretical concepts of theatricality to conduct diagrammatic and spatial analyses, aiming to refine our projects in the course. We will explore the complexity of theatricality and its relationship with performativity, observing how they complement each other in creating experiences.

We will analyze the presence of theatricality in all spaces of the projects, highlighting the dissolution of boundaries between reality and fiction in certain contexts. Furthermore, we will examine the evolution of art and architecture towards interdisciplinarity, emphasizing the influence of space on the visitor's experience and event realization.

Our analysis will promote a contemporary vision of artistic and architectural creation, where theatricality and visitor interaction play critical roles in transcultural mediation.

How will we work and live together?

Module	Design Studio 1	15 CP
Module Component	Typology Design Studio	12 CP
Chair Supervisor	Gebäudetechnik und Entwerfen LB Miryam Aykurt, WM Philip Stillke	
Language	English	
Participants	8	
Place	A205	
Time	Thu 9:00 – 13:00 and 15:00 – 18:00	
First Session	Thu 18.04.2024, 9:00	
Registration	https://isis.tu-berlin.de/course/view.php?id=38038	
Website	https://blog.gte.tu-berlin.de/	

How will we work and live together? (PiV)

Module	Design Studio 1	15 CP
Module Component	Typology Design Studio - PIV	3 CP
Chair Supervisor	FG Bau- und Stadtbaugeschichte Prof.Dr.phil. Ursula Quatember	
Language	English	
Participants	8	
Place	A201A	
Time	Mo, 14:00 - 16:00	
First Session	tba	
Registration	-	
Website	https://www.tu.berlin/bsg	



„Belgienhalle“ – Early Industrial Architecture in Berlin

This seminar is organized together with the Design Studio “How will we work and live together?”. Our main focus is on the so-called “Belgienhalle”, an important monument of industrial architecture, constructed in 1917/1918. We will explore its history and original design as well as its context within this building type at the beginning of the early 20th century. In the seminar we will generate the background information and develop the basis for the future work on the concept and new design of this important historical witness of industrial architecture.

BRICK BY BRICK

Module	Design Studio 1	15 CP
Module Component	Typology Design Studio	12 CP
Chair Supervisor	Architektur und Entwurfsmethoden Prof. Kundoo, WM: Li Lin, Marius Busch, Bene Walbrink	
Language	English, German	
Participants	8	
Place	A403	
Time	Thu + Fri 10:00 – 18:00	
First Session	Thu, 18.04.2024	
Registration	https://isis.tu-berlin.de/course/view.php?id=38038	
Website	tba	

BRICK BY BRICK (PiV)

Module	Design Studio 1	15 CP
Module Component	Typology Design Studio - PiV	3 CP
Chair Supervisor	Gebäudetechnik und Entwerfen Prof. Dr. Daniel Korwan	
Language	English	
Participants	8	
Place	tba	
Time	tba	
First Session	tba	
Registration	-	
Website	https://blog.gte.tu-berlin.de/	

In our vertical design studio, materials transcend their conventional role to become both sources of inspiration and defining elements of space and program. Further, as we rethink the potential of 'local material' in the age of climate change, we look at the underlying materiality culture of place, in all its aspects including its contribution to traditional architecture.

Throughout the semester, we will explore the transformative power of one particular material: BRICK. Participants will engage in an in-depth study of brick, exploring different manufacturing processes, its technical properties, sustainable applications, and aesthetic possibilities. Through hands-on experimentation and critical analysis, we aim to push the boundaries of what a single material can achieve.

Berlin, renowned for its rich tradition of brick architecture, will be our living laboratory. Participants will have the opportunity to reimagine how brick, as a material, could shape contemporary public spaces, showcasing material knowledge, fostering community, and enriching the urban fabric.



Anupama Kundoo Architects

In traditional architectural discourse, energy often takes a backseat to other design considerations, viewed merely as a scarce resource to be conserved during both construction and operation. However, a deeper understanding reveals that matter itself, the fundamental component of architecture, is essentially captured energy. Rather than resisting this reality, architects should embrace it as a fundamental aspect of their practice.

Nowhere is this more evident than in industrially manufactured bricks, which owe their existence to the captured energy of fire. The controlled transformation of intense heat and energy shapes the very essence of bricks, embodying the intricate interplay between fire and earth.

Supporting the Design Studio 'Brick by Brick,' we will explore the profound connection between architecture and energy. From historical contexts to technical analyses, we unravel the myriad dimensions of this relationship, offering participants a deeper understanding of how the fusion of fire and earth culminates in the creation of enduring brick structures."



Anupama Kundoo Architects

Spectral Natures

Module	Design Studio 1	15 CP
Module Component	Typology Design Studio	12 CP
Chair Supervisor	Habitat Unit Prof. Dr. Anke Hagemann, Dr. Christian Haid	
Language	English	
Participants	3	
Place	A 201B Floating University	
Time	Thu, 10:00 - 17:00	
First Session	18.04.2024, 10:00, A 202B	
Registration	https://isis.tu-berlin.de/course/view.php?id=38038	
Website	https://habitat-unit.de	

Spectral Natures (PiV)

Module	Design Studio 1	15 CP
Module Component	Typology Design Studio - PiV	3 CP
Chair Supervisor	Habitat Unit Prof. Dr. Anke Hagemann, Dr. Christian Haid	
Language	English	
Participants	3	
Place	A 201B Floating University	
Time	Thu, 10:00 - 17:00	
First Session	18.04.2024, 10:00, A 202B	
Registration	-	
Website	https://habitat-unit.de	

Spectral Natures
From queer ecologies to urban practice

Society and nature have too often been understood as separate – an asymmetrical and uneven arrangement of power between human and non-human realms. In the age of climate breakdown, technological fixes dominate and are regarded as the remedy to saving our rapidly crumbling planet.

In contrast, queer ecology is a growing transdisciplinary approach that challenges heteronormative, anthropocentric views on the (natural) world and seeks to transcend socially constructed binaries such as culture vs. nature, civilized vs. untamed, pristine vs. contaminated, urban vs. rural, male vs. female. Queer ecology acknowledges the fluidity and diversity of identities within human and other-than-human spheres. It celebrates the unusual, the odd, and the messy realities of cohabitation. It dismantles systems of oppression and shifts the marginal to the center. Its goal is to cultivate inclusive relationships with the environment and all living beings, honoring the widest spectra and the pluriverse, rather than limiting them.

In this research-driven and explorative studio, we will collectively approach queer ecologies and spectral urban natures from multiple angles. We will analyze ecofeminist utopias and practices of care for the earth; we will learn from indigenous knowledge and bicultural diversity; we will garner knowledge from queer adaptation and community practices. In a collective effort and equipped with insights from case studies and transdisciplinary readings, we will develop strategies and formats for an alternative urban practice rooted in a queer ecology approach.

The studio is accompanied by inputs, field trips, lectures, film screenings, and workshops and will mainly take place at Floating University. Students should come with an open mind and bring enthusiasm for the topic, motivation for peer learning, independent critical thinking, and the readiness to freely develop projects of urban practice in small groups and as a collective.

Photo © Filmstill Álvaro Olivera SPRING 2021, www.queeringspace.xyz

Design Studio

Habitat Unit

Spectral Natures
From queer ecologies to urban practice

Society and nature have too often been understood as separate – an asymmetrical and uneven arrangement of power between human and non-human realms. In the age of climate breakdown, technological fixes dominate and are regarded as the remedy to saving our rapidly crumbling planet.

In contrast, queer ecology is a growing transdisciplinary approach that challenges heteronormative, anthropocentric views on the (natural) world and seeks to transcend socially constructed binaries such as culture vs. nature, civilized vs. untamed, pristine vs. contaminated, urban vs. rural, male vs. female. Queer ecology acknowledges the fluidity and diversity of identities within human and other-than-human spheres. It celebrates the unusual, the odd, and the messy realities of cohabitation. It dismantles systems of oppression and shifts the marginal to the center. Its goal is to cultivate inclusive relationships with the environment and all living beings, honoring the widest spectra and the pluriverse, rather than limiting them.

In this research-driven and explorative studio, we will collectively approach queer ecologies and spectral urban natures from multiple angles. We will analyze ecofeminist utopias and practices of care for the earth; we will learn from indigenous knowledge and bicultural diversity; we will garner knowledge from queer adaptation and community practices. In a collective effort and equipped with insights from case studies and transdisciplinary readings, we will develop strategies and formats for an alternative urban practice rooted in a queer ecology approach.

The studio is accompanied by inputs, field trips, lectures, film screenings, and workshops and will mainly take place at Floating University. Students should come with an open mind and bring enthusiasm for the topic, motivation for peer learning, independent critical thinking, and the readiness to freely develop projects of urban practice in small groups and as a collective.

Photo © Filmstill Álvaro Olivera SPRING 2021, www.queeringspace.xyz

PIV

Habitat Unit

Insurgent Design

Module	Design Studio 1	15 CP
Module Component	Typology Design Studio	12 CP
Chair Supervisor	Habitat Unit Prof. Dr. Anke Hagemann, Dr. Juliana Canedo	
Language	English	
Participants	3	
Place	A 202	
Time	Thu, 10:00 - 17:00	
First Session	18.04.2024, 10:00	
Registration	https://isis.tu-berlin.de/course/view.php?id=38038	
Website	https://habitat-unit.de	

Insurgent Design (PiV)

Module	Design Studio 1	15 CP
Module Component	Typology Design Studio - PiV	3 CP
Chair Supervisor	Habitat Unit Prof. Dr. Anke Hagemann, Dr. Juliana Canedo	
Language	English	
Participants	3	
Place	A 202	
Time	Thu, 10:00 - 17:00	
First Session	18.04.2024, 10:00	
Registration	-	
Website	https://habitat-unit.de	

Insurgent Design
Unlearning practices through marginalized spaces and communities

Through a set of collaborative methods and tools for mapping and design the studio proposes to develop a critical understanding of the role of architects and urbanists, especially in contexts of marginalized spaces and communities. The studio intends to promote a transdisciplinary debate by focusing on the perceptions of inclusion of refugees in Berlin, and by collaborating closely with local actors and institutions. Thus, it encourages students to reflect on the integrative and co-productive role of city-building professionals and to devise scenarios that aim to transform the current situation.

Marzahn, students will have the opportunity to engage with local actors and the community, develop activities and interventions and establish a dialog with refugees living in Berlin shelters.

The studio is a cooperation of the research project "Beyond the Shelter: Limits and Possibilities between Departure and Endurance in Refugee Shelters in Berlin" (DFG) with Juliana Canedo, the project "Architectures of Asylum" (SFB: 1265 Re-figurations of Space", DFG) with Qusay Amer and Francesca Ceola, as well as Maureen Abi-Ghanem and Saba Barani.

A PIV connected to the Studio will deal with broader theoretical questions related to migration and refugee studies; it will be conducted as a lecture series in cooperation with "Architectures of Asylum".

Photo © Ani Tashi and Yueqing Wu

Design Studio

Habitat Unit

Insurgent Design
Unlearning practices through marginalized spaces and communities

Through a set of collaborative methods and tools for mapping and design the studio proposes to develop a critical understanding of the role of architects and urbanists, especially in contexts of marginalized spaces and communities. The studio intends to promote a transdisciplinary debate by focusing on the perceptions of inclusion of refugees in Berlin, and by collaborating closely with local actors and institutions. Thus, it encourages students to reflect on the integrative and co-productive role of city-building professionals and to devise scenarios that aim to transform the current situation.

Marzahn, students will have the opportunity to engage with local actors and the community, develop activities and interventions and establish a dialog with refugees living in Berlin shelters.

The studio is a cooperation of the research project "Beyond the Shelter: Limits and Possibilities between Departure and Endurance in Refugee Shelters in Berlin" (DFG) with Juliana Canedo, the project "Architectures of Asylum" (SFB: 1265 Re-figurations of Space", DFG) with Qusay Amer and Francesca Ceola, as well as Maureen Abi-Ghanem and Saba Barani.

A PIV connected to the Studio will deal with broader theoretical questions related to migration and refugee studies; it will be conducted as a lecture series in cooperation with "Architectures of Asylum".

Photo © Ani Tashi and Yueqing Wu

PIV

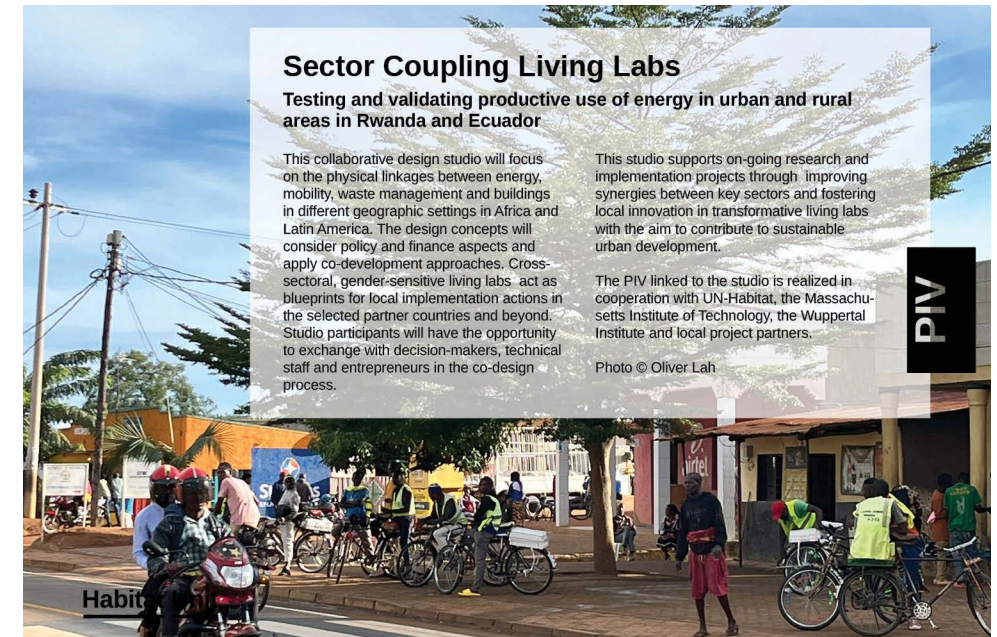
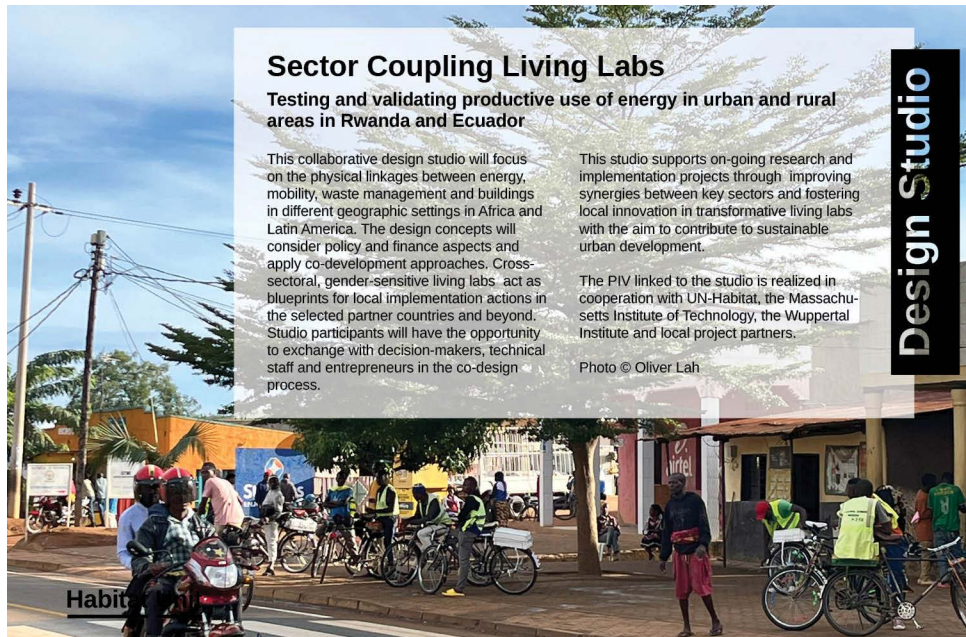
Habitat Unit

Sector-Coupling Living Labs

Module	Design Studio 1	15 CP
Module Component	Typology Design Studio	12 CP
Chair Supervisor	Habitat Unit Prof. Dr. Anke Hagemann, Dr. Oliver Lah	
Language	English	
Participants	3	
Place	A 202	
Time	Fri, 10:00 - 17:00	
First Session	19.04.2024, 10:00	
Registration	https://isis.tu-berlin.de/course/view.php?id=38038	
Website	https://habitat-unit.de	

Sector-Coupling Living Labs (PiV)

Module	Design Studio 1	15 CP
Module Component	Typology Design Studio - PiV	3 CP
Chair Supervisor	Habitat Unit Prof. Dr. Anke Hagemann, Dr. Oliver Lah	
Language	English	
Participants	3	
Place	A 202	
Time	Fri, 10:00 - 17:00	
First Session	19.04.2024, 10:00	
Registration	-	
Website	https://habitat-unit.de	




Hyrdopolitical (Hi)stories: Redrawing Berlin- Brandenburg's Aquifer

Module	Design Studio 1	15 CP
Module Component	Typology Design Studio	12 CP
Chair	CUD	
Supervisor	WiMi Jamie-Scott Baxter; LA Felix Xylander-Swannell	
Language	English	
Participants	3	
Place	A 816	
Time	Thu/Fri , 09:00 - 18:00 (varies)	
First Session	18.04.2024, 10:00	
Registration	https://isis.tu-berlin.de/course/view.php?id=38038	
Website	https://www.cud.tu-berlin.de/	

Hyrdopolitical (Hi)stories: Keeping Tracks (PiV)

Module	Design Studio 1	15 CP
Module Component	Typology Design Studio - PIV	3 CP
Chair	CUD	
Supervisor	WiMi Jamie-Scott Baxter; LA Felix Xylander-Swannell	
Language	English	
Participants	3	
Place	tba	
Time	tba	
First Session	tba	
Registration	-	
Website	https://www.cud.tu-berlin.de/	

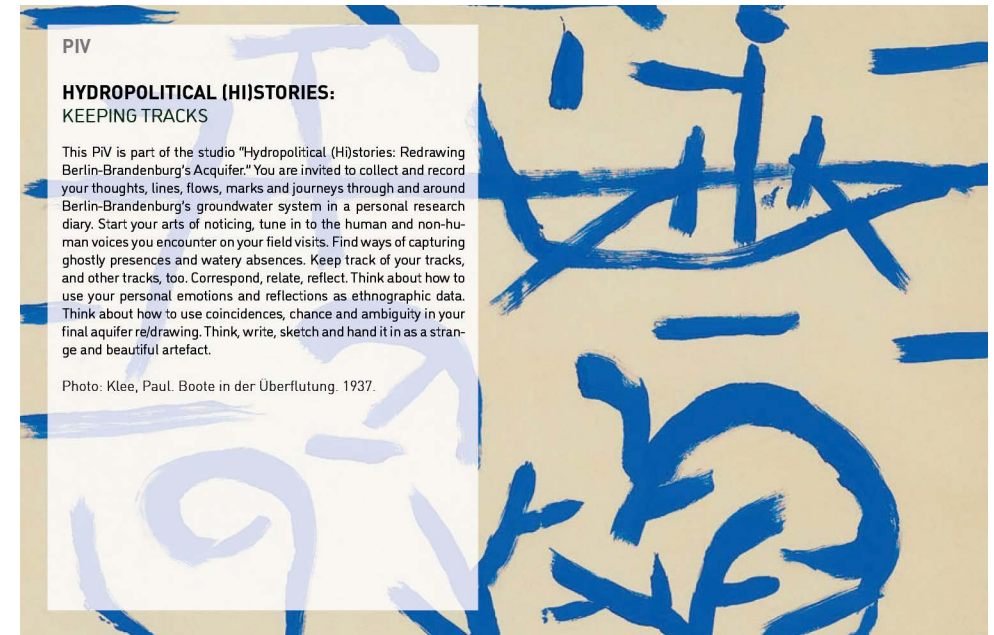


**HYRDOPOLITICAL (HI)STORIES:
REDRAWING BERLIN-BRANDENBURG'S
AQUIFER**

The studio aims to collectively research and redraw Berlin-Brandenburg's aquifer paying close attention to the hydro-political (hi)stories animating it. Typically, techno-scientific representations tend to visualize the aquifer as inert rocky material permeated by groundwater and dislocated from the urban processes above. Our objective is to redesign the ways in which the aquifer as a multitude of vibrant more-than-human matters is made visible and encountered. We do this by reconstructing the specific political pressures that surge water unevenly through urbanized stratifications. Our motivation: to provide new artefacts, concepts and figure-grounds for a more critical spatial design praxis.

Engaging multiple spatial and temporal scales, the studio follows a single assignment to rethink and redesign the aquifer. Working in small groups across four Berlin-Brandenburg sites, you will excavate the sites' specific hydrosocial histories using multimodal methods including, spacetime drawing, hybrid mapping and ethnographic field-work. Methods will be taught through onsite workshops and an optional lecture series (SPACETIME MATTERS). During the course you are encouraged to keep a research diary to critically reflect on your learnings. Submission will include your diaries and short individual reflexive texts (PIV), group portfolios and a singular collective redrawing of the aquifer. logy development.

Photo: Image: Botticelli, Sandro. Chart of Hell. 1480-1490.



PIV

**HYRDOPOLITICAL (HI)STORIES:
KEEPING TRACKS**

This PIV is part of the studio "Hyrdopolitical (Hi)stories: Redrawing Berlin-Brandenburg's Acquifer." You are invited to collect and record your thoughts, lines, flows, marks and journeys through and around Berlin-Brandenburg's groundwater system in a personal research diary. Start your arts of noticing, tune in to the human and non-human voices you encounter on your field visits. Find ways of capturing ghostly presences and watery absences. Keep track of your tracks, and other tracks, too. Correspond, relate, reflect. Think about how to use your personal emotions and reflections as ethnographic data. Think about how to use coincidences, chance and ambiguity in your final aquifer re/drawing. Think, write, sketch and hand it in as a strange and beautiful artefact.

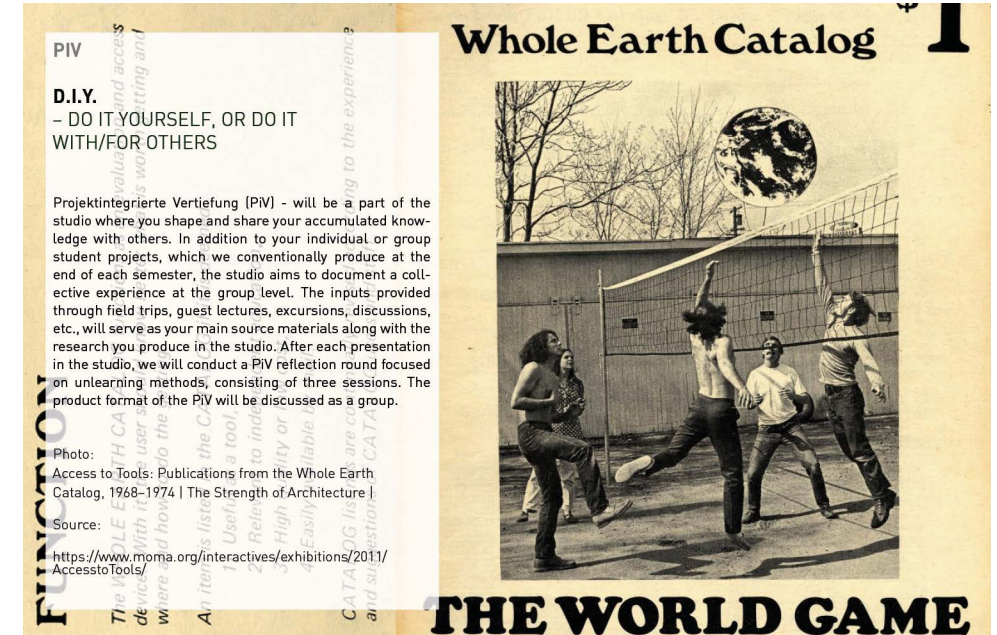
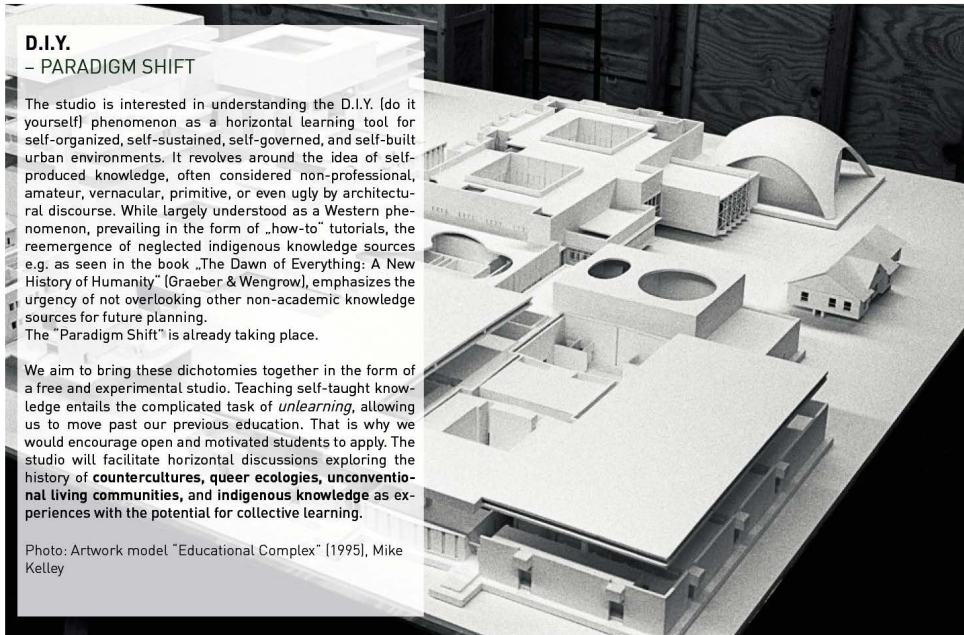
Photo: Klee, Paul. Boote in der Überflutung. 1937.

D.I.Y. Paradigm Shift

Module	Design Studio 1	15 CP
Module Component	Typology Design Studio	12 CP
Chair	CUD	
Supervisor	Prof. Jörg Stollmann, WiMi Veljko Marković	
Language	English	
Participants	3	
Place	A 816	
Time	Thu, 10:00 - 17:00	
First Session	18.04.2024, 10:00	
Registration	https://isis.tu-berlin.de/course/view.php?id=38038	
Website	https://www.cud.tu-berlin.de/	

D.I.Y. Paradigm Shift (PiV)

Module	Design Studio 1	15 CP
Module Component	Typology Design Studio - PiV	3 CP
Chair	Architektur der Transformation + CUD	
Supervisor	WiMi Marta Fernández Guardado, MiMi Veljko Marković	
Language	English	
Participants	3	
Place	A 816	
Time	Thu, 10:00 - 17:00	
First Session	18.04.2024, 10:00	
Registration	-	
Website	https://www.cud.tu-berlin.de/	

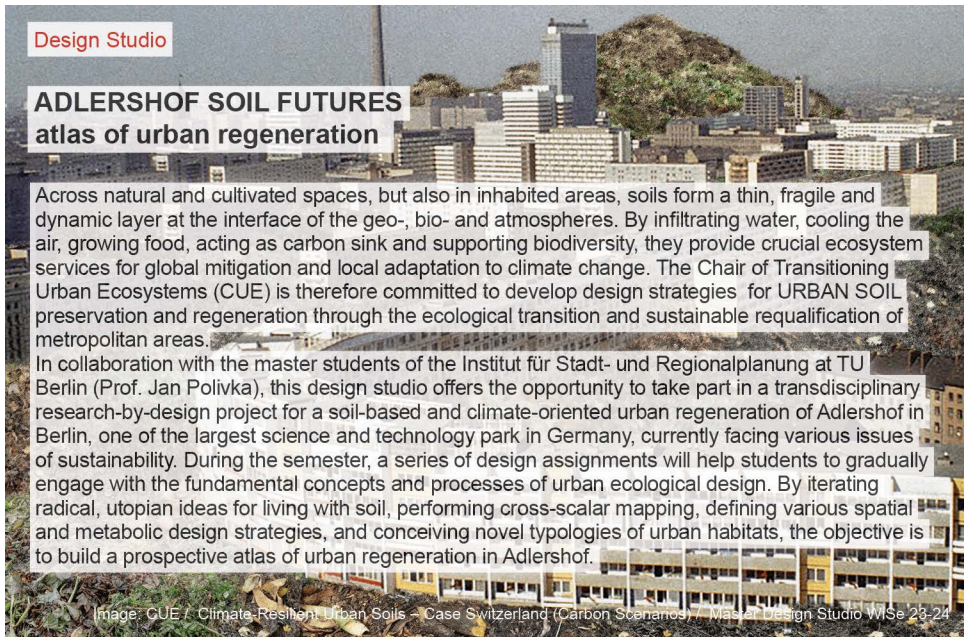


Adlershof Soil Futures: atlas of urban regeneration

Module	Design Studio 1	15 CP
Module Component	Typology Design Studio	12 CP
Chair Supervisor	CUE – Chair of Transitioning Urban Ecosystems Prof Dr Antoine Vialle; Aniella Goldinger; Michel Zalis; Prof Dr Jan Polivka	
Language	English	
Participants	3	
Place	Studio A 815	
Time	Thu, 09:00 – 18:00; Fri, 09:00 – 17:00	
First Session	18.04.2024	
Registration	https://isis.tu-berlin.de/course/view.php?id=38038	
Website	https://www.tu.berlin/sustainableurbanism	

Adlershof Soil Futures: atlas of urban regeneration (PiV)

Module	Design Studio 1	15 CP
Module Component	Typology Design Studio - PiV	3 CP
Chair Supervisor	CUE – Chair of Transitioning Urban Ecosystems Prof Dr Antoine Vialle; Aniella Goldinger; Michel Zalis; Dr habil Thomas Nehls	
Language	English	
Participants	3	
Place	Studio A815	
Time	Mon, 10:00 – 14:00 (6 times during the semester)	
First Session	29.04.2024	
Registration	-	
Website	https://www.tu.berlin/sustainableurbanism	



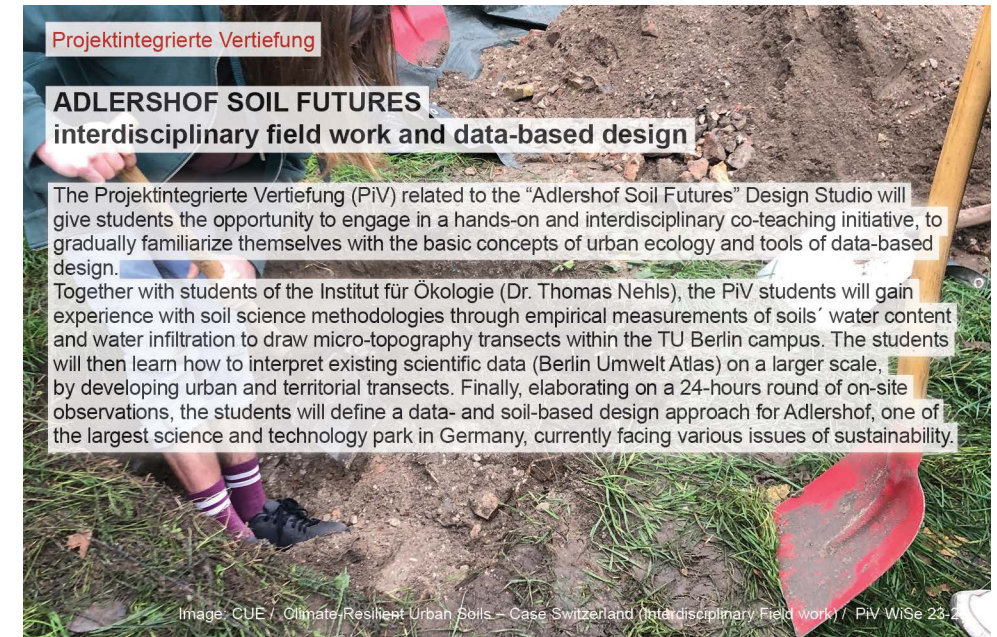
Design Studio

ADLERSHOF SOIL FUTURES atlas of urban regeneration

Across natural and cultivated spaces, but also in inhabited areas, soils form a thin, fragile and dynamic layer at the interface of the geo-, bio- and atmospheres. By infiltrating water, cooling the air, growing food, acting as carbon sink and supporting biodiversity, they provide crucial ecosystem services for global mitigation and local adaptation to climate change. The Chair of Transitioning Urban Ecosystems (CUE) is therefore committed to develop design strategies for URBAN SOIL preservation and regeneration through the ecological transition and sustainable requalification of metropolitan areas.

In collaboration with the master students of the Institut für Stadt- und Regionalplanung at TU Berlin (Prof. Jan Polivka), this design studio offers the opportunity to take part in a transdisciplinary research-by-design project for a soil-based and climate-oriented urban regeneration of Adlershof in Berlin, one of the largest science and technology park in Germany, currently facing various issues of sustainability. During the semester, a series of design assignments will help students to gradually engage with the fundamental concepts and processes of urban ecological design. By iterating radical, utopian ideas for living with soil, performing cross-scalar mapping, defining various spatial and metabolic design strategies, and conceiving novel typologies of urban habitats, the objective is to build a prospective atlas of urban regeneration in Adlershof.

Image: CUE / Climate-Resilient Urban Soils – Case Switzerland (Carbon Scenarios) / Master Design Studio WiSe 23-24



Projektintegrierte Vertiefung

ADLERSHOF SOIL FUTURES interdisciplinary field work and data-based design

The Projektintegrierte Vertiefung (PiV) related to the “Adlershof Soil Futures” Design Studio will give students the opportunity to engage in a hands-on and interdisciplinary co-teaching initiative, to gradually familiarize themselves with the basic concepts of urban ecology and tools of data-based design.

Together with students of the Institut für Ökologie (Dr. Thomas Nehls), the PiV students will gain experience with soil science methodologies through empirical measurements of soils’ water content and water infiltration to draw micro-topography transects within the TU Berlin campus. The students will then learn how to interpret existing scientific data (Berlin Umwelt Atlas) on a larger scale, by developing urban and territorial transects. Finally, elaborating on a 24-hours round of on-site observations, the students will define a data- and soil-based design approach for Adlershof, one of the largest science and technology park in Germany, currently facing various issues of sustainability.

Image: CUE / Climate-Resilient Urban Soils – Case Switzerland (Interdisciplinary Field work) / PiV WiSe 23-24

Compulsory Modules

Design Studios

Fundamental Modules

Compulsory Optional Modules

Optional Modules

IMAGINATIONS OF VENICE - VENICE GAMES

Module	Types and Translation	6 CP
Chair Supervisor	Bildende Kunst Prof. Stefanie Bürkle, Mika Schwarz	
Language	English	
Participants	30	
Place	A 703	
Time	Mon. and Wed. 10:00	
First Session	29.04.2024	
Registration	at the first session	
Website	https://www.kunst.tu-berlin.de/pages/	

Typology and Land Scarcity

Module	Scales and Methodology	6 CP
Module Component	Scales and Methodology II	3 CP
Chair Supervisor	Architektonische und urbane Typologien Zorica Medo	
Language	English	
Participants	30	
Place	tba	
Time	Tu, 14:00 -16:00	
First Session	23.04.2024	
Registration	via e-mail zorica.medo@tu-berlin.de	
Website	www.tu.berlin/lia	

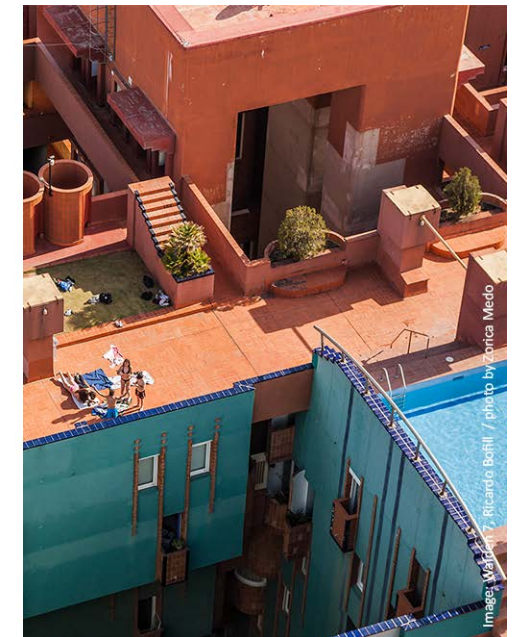


TPOLOGY AND LAND SCARCITY

The current scarcity of land, together with related issues and challenges such as population growth, fixed city boundaries and rising land prices, is having a massive impact on Berlin's urban systems. The situation has become particularly alarming since the global financial crisis, which has further positioned land as an internationally desirable investment.

As one of the possible strategies to deal with land scarcity, the "Scales and Methodology" course will focus on typologies developed and built in response to the problem. We will discuss different theoretical stances and backgrounds of the problem and look at a selection of reference concepts and projects developed in different metropolitan areas. We will see how land scarcity affects not only the spatial characteristics of these typologies, but also the social life that takes place within them.

In a second step, our detailed analysis of the selection of compact, dense and hybrid buildings will focus on examples built in different periods of Berlin's recent history, using morphological analysis, fieldwork and multiscale ethnographic mapping. The possibility to visit the examples and the methods chosen will allow us to look more closely at their social and spatial settings, as well as their mutual conditionality.



Compulsory Modules

Design Studios
Fundamental Modules

Compulsory Optional Modules

Optional Modules

Architectural Education Within Changing Environmental Conditions

Module	Architekturtheorie/Kritik III	6 CP
Chair Supervisor	Architekturtheorie Dr. Lidia Gasperoni	
Language	English	
Participants	tba	
Place	A 201a	
Time	08.04. (10-13), 09.04.(10-13), 15.04.(10-13), 16.04. (10-13), 24.04 (13-19), 25.04. (10-19), 30.04 (10-13)	
First Session	08.04.2024.	
Registration	ISIS	
Website	https://www.tu.berlin/architekturtheorie	

Narratives of Architectural Atmosphere

Module	Architekturtheorie/Philosophie I (Architecture Theory/Philosophy I)	3 CP
Chair Supervisor	Architekturtheorie Prof. Dr. Verica Krstic (University of Belgrade), Prof. Dr. Jörg H. Gleiter	
Language	English	
Participants	15	
Place	A 052	
Time	21.05.-29.05.2024., 16:00-20:00 (compact seminar, exact dates to be announced)	
First Session	30.04.2024., 16:00-18:00 (online)	
Registration	tba	
Website	https://www.tu.berlin/architekturtheorie	

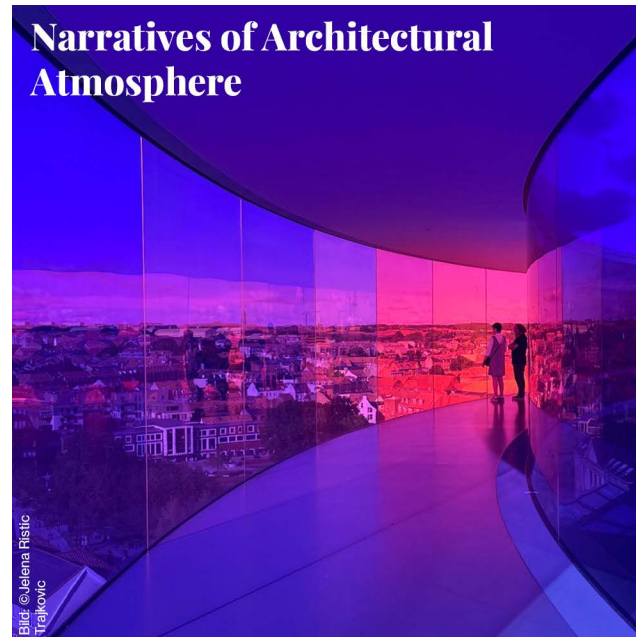
The seminar is conceived as an intensive course culminating in the international symposium IMPACT THROUGH TEACHING! This event (24-25 April 2024) aims to illuminate the transformative effects and driving forces of emerging educational practices and to promote a dialogue between students, international researchers and educators in the field of architecture. The seminar will introduce fields of theories, histories and practices of architectural education by engaging students with a critical approach to education and a self-reflection on the own experiences studying architecture.

Architectural Education Within Changing Environmental Conditions

LIDIA GASPERONI
PhD, Department of
Architectural Theory

SECTIONS
April 8-9 (10am-1pm) OPEN to master students
April 15-16 (10am-1pm) REGISTRATION: ISIS
April 24 (1-7pm)
April 25 (10am-7pm) ROOM: A201a
April 30 (10am-1pm)

Narratives of Architectural Atmosphere



The conceptualization of atmosphere as an emerging phenomenon in architecture is commonly discussed as created between a perceptive capacity of humans and an effective environment. The ambiguous character of the phenomenon resonates in such multidimensional conditionality to produce content of architectural ambience. The ambition of the course is to understand and utilize these organizational strategies and to engage them in the design process.

Architecture Inside-Out — Interior Design

Module	Architekturtheorie/Theorie I (Architecture Theory/Theory I) 3 CP
Chair Supervisor	Architekturtheorie Prof. Shuli Beimel (The Technion, Haifa), Prof. Dr. Jörg H. Gleiter
Language	English
Participants	15
Place	tba
Time	07.05. and 28.05.2024., 18:00-20:00 (online), 05.06.-12.06.2024. (in presence, hours to be announced)
First Session	16.04.2024., 18:00-20:00 (online)
Registration	tba
Website	https://www.tu.berlin/architekturtheorie

“Sublime” Obsolescence and Contemporary Relevance of an Aesthetic Category

Module	Architekturtheorie/Kritik I (Architecture Theory/Criticism I) 3 CP
Chair Supervisor	Architekturtheorie Prof. Dr. Andrea Borsari (University of Bologna), Prof. Dr. Jörg H. Gleiter
Language	English
Participants	15
Place	A 052
Time	23.04. and 07.05.2024., 16:00-18:00 (online), 13.05.-15.05.2024., 16:00-20:00 (in presence)
First Session	23.04.2024.
Registration	tba
Website	https://www.tu.berlin/architekturtheorie



Architecture Inside-Out — Interior Design
Berlin as a Case Study and Research Laboratory

Outside and inside form a dialectic of division, writes the French philosopher Gaston Bachelard. Open closed open. That's all we are, posits the Israeli poet Yehuda Amichai in describing the life cycle of a person from the moment he enters the world to the moment he departs from it. In the seminar we shall examine the interior spaces as a theoretical and physical space. In the seminar, we will review a number of case studies by way of walking tours around the city of Berlin. We will try to expand our professional toolbox by analyzing and studying the phenomena that materialize within these spaces.



“Sublime” Obsolescence and Contemporary Relevance of an Aesthetic Category

From many sides, the aesthetic category of the sublime has been evoked to account for reactions to important contemporary phenomena, such as global warming and the complex of issues converging in the anthropocene debate. As the historian of science Jean-Baptiste Fressoz has written: The strength of the Anthropocene idea is not conceptual, scientific or heuristic: it is above all aesthetic. To explore this potential, the course aims to discuss its implications and variations with respect to the historical heritage of the sublime as a historical category.

Tangyang: Imperial Qing Chinese Architectural Paper Models in Theory and Practice

Module	Baugeschichte – Konstruktion und Technik III (MA)	6 CP
Chair Supervisor	FG Bau- und Stadtbaugeschichte Prof.Dr.phil. Ursula Quatember, Liang Song M.Sc. Melanie Nguyen, M.A.	
Language	English	
Participants	20	
Place	A 205	
Time	Mo, 10:00 – 12:00 introduction & block dates in May and June	
First Session	15.04.2024	
Registration	MOSES + https://isis.tu-berlin.de/course/view.php?id=37715	
Website	https://www.tu.berlin/bsg	



Tangyang: Imperial Qing Chinese Architectural Paper Models in Theory and Practice

The seminar will explore so-called tangyang, Chinese architectural paper models of imperial mausolea made for the Qing Dynasty in the late 19th and early 20th century. In a theoretical part, we will study the making of Chinese paper models and the historical as well as the architectural context of tangyang. In an intense hands-on seminar during late May and early June we will explore the practical aspects of Chinese paper model making: Together with colleagues from Tsinghua University, School of Architecture (Beijing), we will rebuild parts of a tangyang that is currently housed in the Ethnological Museum Berlin, using traditional techniques as well as authentic materials.

From Augustus to Mussolini

Module	Baugeschichte - Architektur als Ausdruck politischer Tendenzen I (Ma)	3 CP
Chair Supervisor	FG Bau- und Stadtbaugeschichte Prof.Dr.phil. Ursula Quatember	
Language	English	
Participants	30	
Place	A 201a	
Time	Tue, 10:00 – 12:00	
First Session	16.04.2024	
Registration	https://isis.tu-berlin.de/course/view.php?id=37714	
Website	https://www.tu.berlin/bsg	



From Augustus to Mussolini: Urbanism in 20th Century Rome at the Dawn of Fascism

The city of Rome has a rich cultural heritage since its mythical foundation in 753 BCE. Starting with the urban renewal under the emperor Augustus (31 BCE–14 CE), the city has been transformed ever since. One such example is the urban renewal during the Baroque period. The seminar will focus on the urban planning of the Fascist era in the early 20th century, and its attempts to utilize the rich architectural legacy of Rome dated back to antiquity for contemporary propagandistic purposes. The seminar will be taught in English. Passive knowledge of the German language is required.

Sustainable Urban Development and Governance

Module	Research Workshop: Von der Praxis zum wissenschaftlichen Arbeiten	6 CP
Chair Supervisor	Planungs- und Bauökonomie / Immobilienwirtschaft Dr. Paulus van der Kuil	
Language	English	
Participants	30	
Place	tba	
Time	Di, 16:00-18:00	
First Session	16.04.24, 12 Uhr A151	
Registration	Moses / ISIS	
Website	https://www.tu.berlin/pbi	

IfA EXPO 2024

Module	Architekturkommunikation	6 CP
Chair Supervisor	CUD IfA Kollektiv, Jörg Stollmann	
Language	German, English	
Participants	30	
Place	A 201a	
Time	Tue, 16:00-18:00	
First Session	16.04.2024, 16:00	
Registration	at the first session	
Website	https://www.cud.tu-berlin.de/	

Sustainable Urban Development, Real Estate and Governance

The 2015 Paris Climate Agreement includes the commitment to align financial flows with low-carbon and climate-resilient development. For the European Union member states, the Paris Agreement has been further developed into the European Green Deal Investment Plan of 2020. This includes a regulatory framework on disclosure and taxonomy of so-called ESG - Environmental, Social and Governance - considerations for real estate investors investing and developing the urban environment we live in. This regulatory framework is currently forcing and stimulating the real estate sector to integrate social, cultural, and environmental considerations into their feasibility strategies and calculations. The seminar consists out of interactive lectures and workshops. In the lectures, the students will be taught the basics of real estate and urban development feasibility calculations within the theoretical framework of the Real Estate System as provided by Geltner and Miller. Furthermore, necessary Governance will be addressed as an important element in achieving any sustainability goals. During the workshops the students will work in groups of 3-4 persons on the critical reflection and rethinking of the the Berlin Europaviertel (Heidestraße). Initially each group formulates a statement or vision what sustainability in its financial, social, cultural and governance dimension for the Europaviertel should have been. This statement is then presented to and discussed with the whole group. Thereafter each group will develop and review their statement into a feasibility strategy that includes ESG considerations, is financially feasible and could have provided in a realistic development alternative for this site. The seminar includes excursions to Berlin Europaviertel and the Holzmarkt Development. After completion of the seminar, the students will have gained knowledge of the basic principles of financial feasibility and urban governance as well as the challenges and opportunities in integrated sustainable urban development. The graded submission consists out of a A0 Poster and 15-30-page report per group (Hausarbeit).

This years exhibition will continue the tradition of a student organized event. We want to explore different ways of communicating and discussing architecture at the IfA, coordinate the exhibition of all student works, create a space for different talks and interactions, as well as celebrate the completed semester.



Adlershof Soil Futures: urban soils portraits

Module	Aspekte zeitgenössischer städtebaulicher Theorie	3 CP
Chair Supervisor	CUE – Chair of Transitioning Urban Ecosystems Prof Dr Antoine Vialle; Aniella Goldinger; Michel Zalis	
Language	English	
Participants	35	
Place	Studio A815	
Time	Mo, 14:00 – 17:00	
First Session	29.04.2024	
Registration	tba	
Website	https://www.tu.berlin/sustainableurbanism	

Beyond the family: Non-normative housing practices

Module	Aspekte städtebaulicher Analyse- und Entwurfsmethodik	6 CP
Chair Supervisor	CUD LA Ana Filipović Mecke	
Language	English	
Participants	15	
Place	A 816	
Time	Mo 10:00-14:00	
First Session	First meeting 15.04.2024 A815 at 10.00 Uhr	
Registration	tba	
Website	https://www.cud.tu-berlin.de/	

MA Seminar

ADLERSHOF SOIL FUTURES urban soils portraits

Across natural and cultivated spaces, but also in inhabited areas, soils form a thin, fragile and dynamic layer at the interface of the geo-, bio- and atmospheres. By infiltrating water, cooling the air, growing food, acting as carbon sink and supporting biodiversity, they provide crucial ecosystem services for global mitigation and local adaptation to climate change. The Chair of Transitioning Urban Ecosystems (CUE) is therefore committed to develop design strategies for URBAN SOIL preservation and regeneration through the ecological transition and sustainable requalification of metropolitan areas.

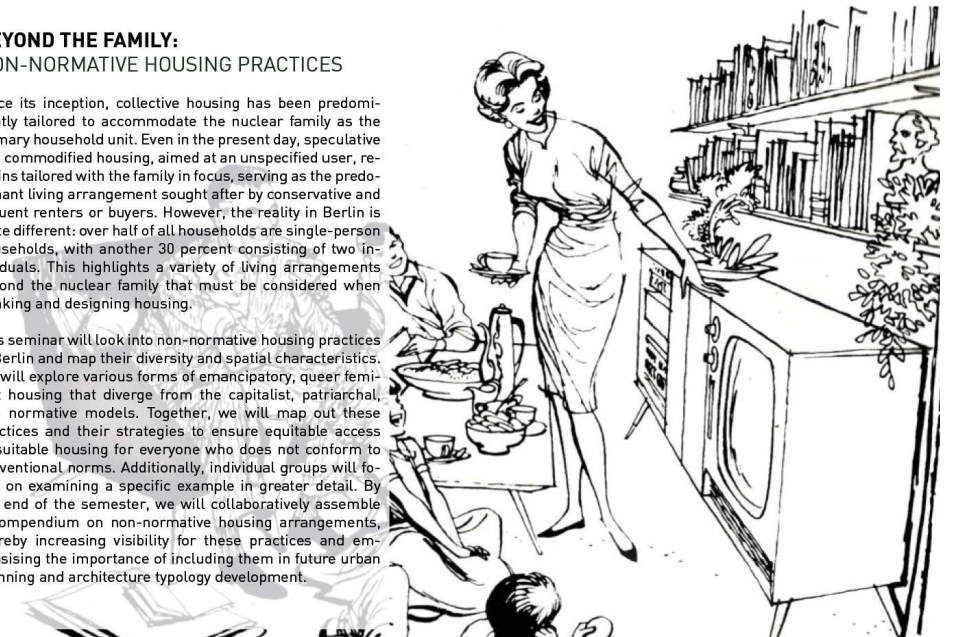
The objective of the Master Seminar is to investigate a series of characteristic historical and contemporary Berlin's urban soils at different scales, ranging from in situ observations to the larger territorial systems of the metropolitan area. Using various methods relating to archival exploration, ecological field survey, processing of existing datasets, or analysis of ongoing policies, the students will elaborate, in the first place, a repertoire of "soil portraits" or "soil narratives" for Adlershof, one of the largest science and technology park in Germany, currently facing various issues of sustainability. Students will then formulate topical hypotheses for a catalogue of purposed-designed urban soils profiles, and test them in regards to future soil regeneration and climate change adaptation in Adlershof.

Image: <https://www.adlershof.de/kiez/geschichte>

BEYOND THE FAMILY: NON-NORMATIVE HOUSING PRACTICES

Since its inception, collective housing has been predominantly tailored to accommodate the nuclear family as the primary household unit. Even in the present day, speculative and commodified housing, aimed at an unspecified user, remains tailored with the family in focus, serving as the predominant living arrangement sought after by conservative and affluent renters or buyers. However, the reality in Berlin is quite different: over half of all households are single-person households, with another 30 percent consisting of two individuals. This highlights a variety of living arrangements beyond the nuclear family that must be considered when thinking and designing housing.

This seminar will look into non-normative housing practices in Berlin and map their diversity and spatial characteristics. We will explore various forms of emancipatory, queer feminist housing that diverge from the capitalist, patriarchal, and normative models. Together, we will map out these practices and their strategies to ensure equitable access to suitable housing for everyone who does not conform to conventional norms. Additionally, individual groups will focus on examining a specific example in greater detail. By the end of the semester, we will collaboratively assemble a compendium on non-normative housing arrangements, thereby increasing visibility for these practices and emphasising the importance of including them in future urban planning and architecture typology development.



CRUSHUP 6

Module	Architekturdarstellung und digitale Fertigung I (MA)	3 CP
Chair Supervisor	FG Architekturdarstellung und -gestaltung (Borrego) Prof. Dr. Ignacio Borrego Pallette, WM Dr. Gaizka Altuna Charterina	
Language	English	
Participants	15	
Place	A 204b	
Time	Tue, 15:00 -17:00	
First Session	16.04.2024	
Registration	see website	
Website	http://colab-tuberlin.de/	

PLASTIC!

Module	Architekturdarstellung und digitale Fertigung II (MA)	6 CP
Chair Supervisor	Architekturdarstellung und Gestaltung Prof. Dr. Ignacio Borrego Pallette, WM Dr. Gaizka Altuna Charterina	
Language	English	
Participants	36	
Place	A 204B	
Time	Tue, 10:00 -12:00	
First Session	16.04.2024	
Registration	see website	
Website	http://colab-tuberlin.de/	



KOTYDZ: HOUSING FOR FERAL CATS IN POZNAN

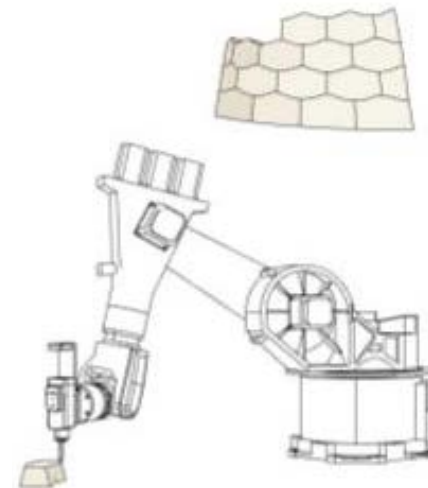
Module	Gestaltungsaufgabe mit Darstellungsschwerpunkt I (MA)	3 CP
Chair Supervisor	FG Architekturdarstellung und -gestaltung (Borrego) Prof. Ignacio Borrego; WM Dr. Gaizka Altuna Charterina; WM Mirza Vranjakovic	
Language	English	
Participants	10	
Place	A 204b	
Time	Tue, 13:00 – 15:00	
First Session	16.04.2024	
Registration	first session	
Website	http://colab-tuberlin.de/	

Digital Design and Fabrication for Timber

Module	Bauliche Realisierung im internationalen Kontext	9 CP
Chair Supervisor	Tragwerksentwurf und -konstruktion (IfA) + Robotergestützte Fertigung der gebauten Umwelt (IfB) Pelin Asa, Stefan Neuhäuser, Sakiko Noda, Prof. Dr.-Ing. Inka Mai, Prof. Dr.-Ing. Kerstin Wolff	
Language	English	
Participants	8 + 4 Bauingenieurwesen	
Place	A 513	
Time	Wed, 09:30-12:30	
First Session	17.04.2024	
Registration	tba	
Website	https://www.tu.berlin/tek , https://www.tu.berlin/bauroboter	



Seminar: Digital Design and Fabrication for Timber



Forests in Germany are being devastated by bark beetles that damage vast areas of spruce trees, one of the most common structural timber species. New ways of construction are needed to get the most out of and revalorize this material.

In this course we will explore units that we can obtain out of diseased logs to create reversible interlocking assemblies informed by fabrication limitations, ease of construction and structural analysis. We will utilize digital and parametric modeling for the design and analysis of complex geometries.

This course will include hands-on exploration of timber with both manual techniques and digital fabrication tools such as CNC and robotic milling to produce precise connections and modular units. Based on our design studies and prototypes, we will end with the exploration of structures that can be built with these units.

Previous knowledge in Rhino and Grasshopper is not mandatory but would be helpful.

90% Plus: Recycled Realities

Module	Seminar: Sondergebiete der internationalen Urbanistik B	6 CP
Chair Supervisor	Habitat Unit David Bauer, Kevin Kimwelle & Rosa Hanhausen.	
Language	English	
Participants	15	
Place	A 507	
Time	27.05-31.05 2024 tba	
First Session	22.04.2024, 11:00	
Registration	at first session	
Website	https://habitat-unit.de	

Kiosk of Solidarity II

Module	Seminar: Sondergebiete der internationalen Urbanistik B	6 CP
Chair Supervisor	Habitat Unit Prof. Dr. Anke Hagemann, Dr. Moritz Ahlert	
Language	English	
Participants	15	
Place	A 507	
Time	Tue, 10:00 -12:00	
First Session	tba	
Registration	at first session	
Website	https://habitat-unit.de	



90% Plus: Recycled Realities

A Collaboration with Bauhaus Earth & Experimental

The seminar offers a 5-day intensive design-build workshop with South African architect and activist Kevin Kimwelle. Kevin is the founder of Indalo World, an NGO that uses alternative design to create high socio-economic and environmental impact through holistic work that integrates practice, academia, and activism. His works includes a community center made from 80% recycled elements, a home made from 90% reclaimed material from the motorcar industry, and exhibitions featuring 100% recycled waste materials for Alliance Française and Zeitz MOCAA.

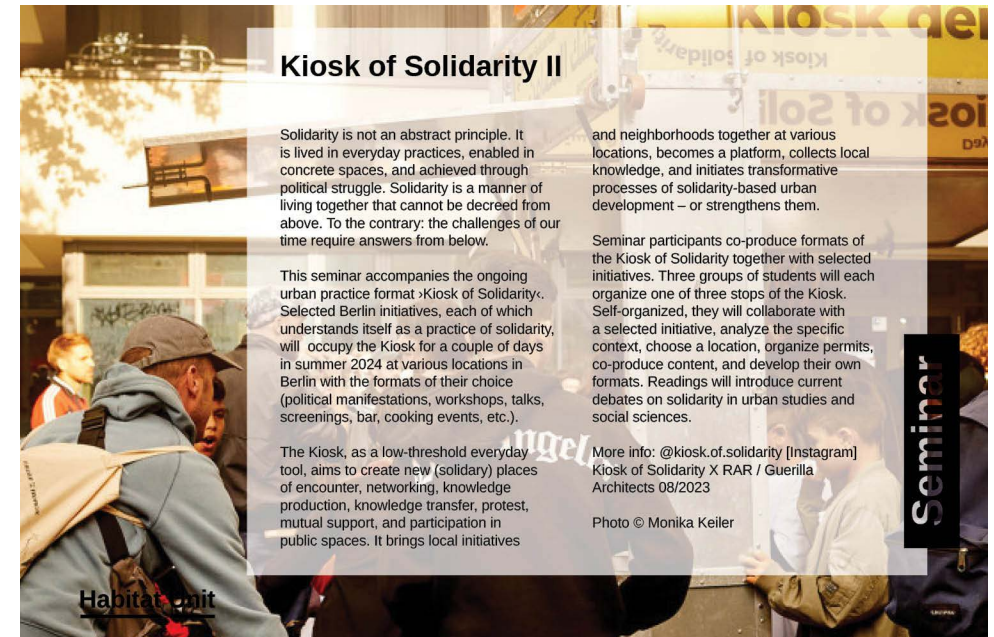
Kevin is the current BE-FELLOW investigating and examining his practice of reused building components in South Africa reflected in the Berlin context. At Bauhaus Earth's LAB in Berlin, we will have a hands-on approach to the topics of circularity and urban mining by exploring together the art of working with reclaimed materials, such as gypsum boards, concrete, plaster, or wood; all of which make Kimwelle's recycled structures an inspiring pathway towards alternative futures.

Besides the workshop, the course will include site visits to Berlin demolition sites guided and directed by the tutors, followed by a compact implementation phase that concludes with documentation of both the process and the findings through diagrams, drawings, mappings, and/or other media. The results of this seminar are to be documented in a publication as part of the BE-FELLOW in collaboration between Bauhaus Earth and Experimental, a non-profit organisation that fosters projects that aim to discover new territories in the field of architecture with the goal of changing how and with what we build.

Photo © Kevin Kimwelle

Seminar

Habitat Unit



Kiosk of Solidarity II

Solidarity is not an abstract principle. It is lived in everyday practices, enabled in concrete spaces, and achieved through political struggle. Solidarity is a manner of living together that cannot be decreed from above. To the contrary: the challenges of our time require answers from below.

and neighborhoods together at various locations, becomes a platform, collects local knowledge, and initiates transformative processes of solidarity-based urban development – or strengthens them.

This seminar accompanies the ongoing urban practice format ›Kiosk of Solidarity‹. Selected Berlin initiatives, each of which understands itself as a practice of solidarity, will occupy the Kiosk for a couple of days in summer 2024 at various locations in Berlin with the formats of their choice (political manifestations, workshops, talks, screenings, bar, cooking events, etc.).

Seminar participants co-produce formats of the Kiosk of Solidarity together with selected initiatives. Three groups of students will each organize one of three stops of the Kiosk. Self-organized, they will collaborate with a selected initiative, analyze the specific context, choose a location, organize permits, co-produce content, and develop their own formats. Readings will introduce current debates on solidarity in urban studies and social sciences.

The Kiosk, as a low-threshold everyday tool, aims to create new (solidary) places of encounter, networking, knowledge production, knowledge transfer, protest, mutual support, and participation in public spaces. It brings local initiatives

More info: @kiosk.of.solidarity (Instagram)
Kiosk of Solidarity X RAR / Guerilla Architects 08/2023

Photo © Monika Keiler

Seminar

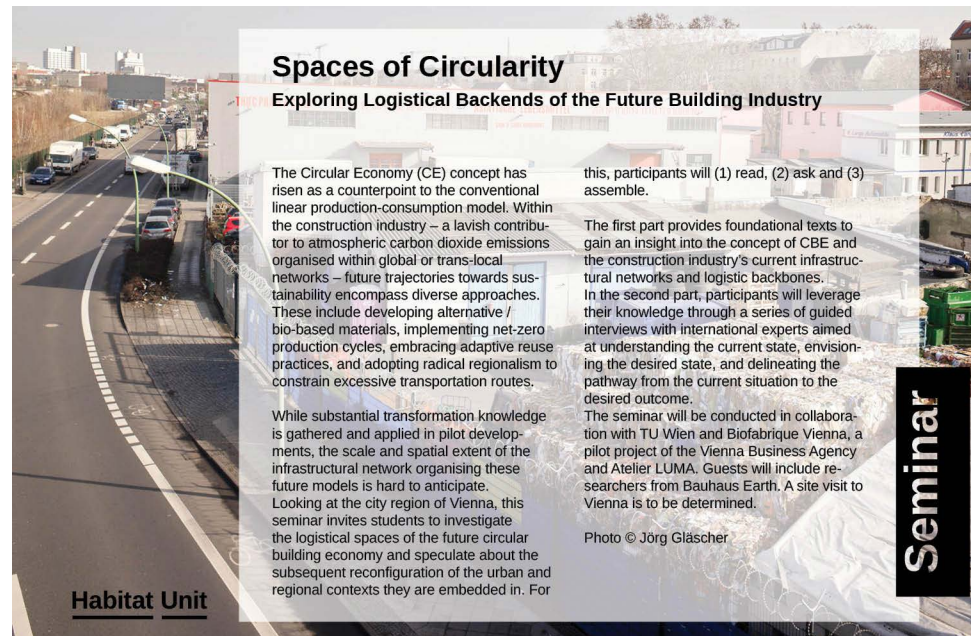
Habitat Unit

Spaces of Circularity: Exploring Logistical Backends of the Future Building Industry

Module	Seminar: Sondergebiete der internationalen Urbanistik A Seminar: Sondergebiete der internationalen Urbanistik B	3 CP 6 CP
Chair Supervisor	Habitat Unit Prof. Dr. Anke Hagemann, MSc David Bauer	
Language	English	
Participants	15	
Place	A 507	
Time	Tue, 13:30 – 16:00	
First Session	15.04.2024	
Registration	at first session	
Website	https://habitat-unit.de	

Contemporary Arab Urbanism: Power relations and Participation in Arab Public Space

Module	Seminar: Sondergebiete der internationalen Urbanistik B	6 CP
Chair Supervisor	Habitat Unit Prof. Dr. Anke Hagemann, Dr. Hassan Elmouelhi	
Language	English	
Participants	30	
Place	A 507	
Time	Tue, 12:00 -14:00	
First Session	tba	
Registration	at first session	
Website	https://habitat-unit.de	



Spaces of Circularity

Exploring Logistical Backends of the Future Building Industry

The Circular Economy (CE) concept has risen as a counterpoint to the conventional linear production-consumption model. Within the construction industry – a lavish contributor to atmospheric carbon dioxide emissions organised within global or trans-local networks – future trajectories towards sustainability encompass diverse approaches. These include developing alternative / bio-based materials, implementing net-zero production cycles, embracing adaptive reuse practices, and adopting radical regionalism to constrain excessive transportation routes.

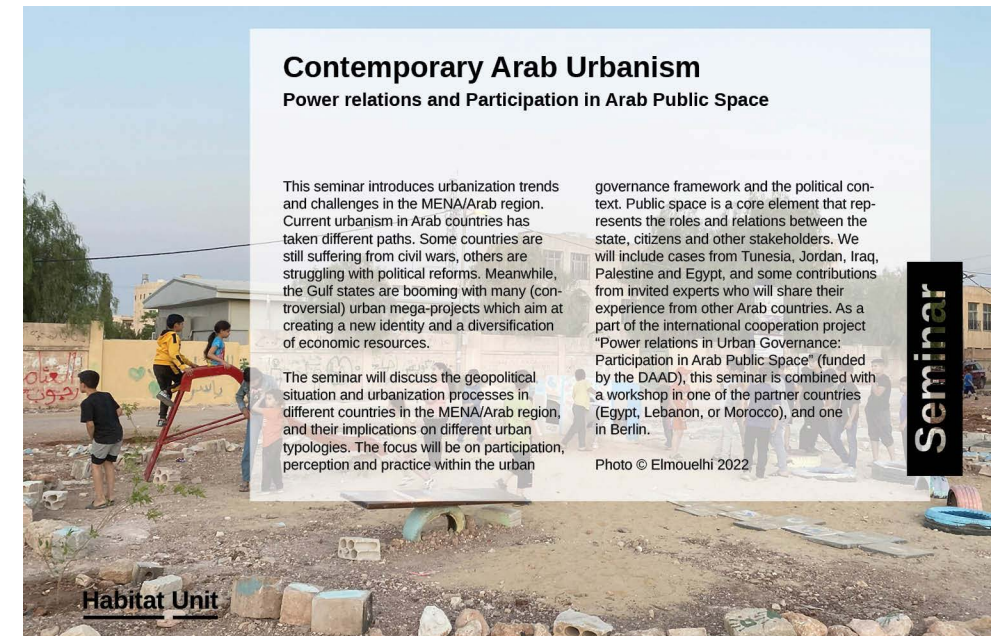
While substantial transformation knowledge is gathered and applied in pilot developments, the scale and spatial extent of the infrastructural network organising these future models is hard to anticipate. Looking at the city region of Vienna, this seminar invites students to investigate the logistical spaces of the future circular building economy and speculate about the subsequent reconfiguration of the urban and regional contexts they are embedded in. For this, participants will (1) read, (2) ask and (3) assemble.

The first part provides foundational texts to gain an insight into the concept of CBE and the construction industry's current infrastructural networks and logistic backbones. In the second part, participants will leverage their knowledge through a series of guided interviews with international experts aimed at understanding the current state, envisioning the desired state, and delineating the pathway from the current situation to the desired outcome.

The seminar will be conducted in collaboration with TU Wien and Biofabrique Vienna, a pilot project of the Vienna Business Agency and Atelier LUMA. Guests will include researchers from Bauhaus Earth. A site visit to Vienna is to be determined.

Photo © Jörg Gläscher

Seminar



Contemporary Arab Urbanism

Power relations and Participation in Arab Public Space

This seminar introduces urbanization trends and challenges in the MENA/Arab region. Current urbanism in Arab countries has taken different paths. Some countries are still suffering from civil wars, others are struggling with political reforms. Meanwhile, the Gulf states are booming with many (controversial) urban mega-projects which aim at creating a new identity and a diversification of economic resources.

The seminar will discuss the geopolitical situation and urbanization processes in different countries in the MENA/Arab region, and their implications on different urban typologies. The focus will be on participation, perception and practice within the urban governance framework and the political context. Public space is a core element that represents the roles and relations between the state, citizens and other stakeholders. We will include cases from Tunisia, Jordan, Iraq, Palestine and Egypt, and some contributions from invited experts who will share their experience from other Arab countries. As a part of the international cooperation project "Power relations in Urban Governance: Participation in Arab Public Space" (funded by the DAAD), this seminar is combined with a workshop in one of the partner countries (Egypt, Lebanon, or Morocco), and one in Berlin.

Photo © Elmouelhi 2022

Seminar

Learning from the Rebellion

Module	Experimentelle Entwurfsmethoden II a	3 CP
Chair	Entwerfen und Baukonstruktion – Konstruktionen und Praktiken & Bau- und Stadtbaugeschichte	
Supervisor	Vanni Sacconi, Liang Song English	
Language	15	
Participants	A 205	
Place	Wed, 16:00 – 18:00	
Time	17.04.2024, 16:00 – 18:00	
First Session	at first session & ISIS	
Registration	www.code.tu-berlin.de & https://www.tu-berlin/bsg	
Website		

CHARGING SPACE

Modul	Bioclimatic Design II	6 LP
Fachgebiet	Gebäudetechnik und Entwerfen	
Betreuer*innen	Prof. Dr. Daniel Korwan, WM NN	
Sprache	English	
Teilnehmer*innen	16	
Ort	A201A	
Zeit	Tu, 12:00-16:00	
1. Veranstaltung	23.04.2024	
Anmeldung	during first session, Moses	
Website	https://blog.gte.tu-berlin.de/	



Learning from the Rebellion

CODE

Florence, 1966. A city flooding (climate change?) alters forever this sleepy city in the province of the world which achieved its heights during the Renaissance. The sleeping beauty awakens from its rest. The protest against modern capitalism of 68, war in Vietnam, political terrorism are all around. A crack opens between the walls of an architecture university and Radical Architecture was born.

FGI | BSG
FACHGEBIET BAU UND STADTBAUGESCHICHTE

We will reflect together the Heritage of this movement with Focus on the experiences of Superstudio and Archizoom, both through their writings and grafical language. What does it mean to rebel today?



In recent years, climate-responsive design has gained significant attention, moving beyond its historical niche. However, the focus often remains quantitative, neglecting the ephemeral climatic spaces beyond traditional boundaries. These spaces, shaped by daily, monthly, or seasonal phenomena, challenge the interior-exterior dichotomy. Recognizing architecture's potential, we see „charged spaces“ as dynamic entities influenced by evolving environmental factors. Architects can transform these spaces into active components through observation and responsive interventions. This course explores the historical trajectory of climate-responsive design, urging you to understand and control the non-material, intangible dimension of architecture.

CHARGING SPACE

photo: Steve Silverman

Fictions Fantasies Fabulations

Module	Intensive Programme	6 CP
Chair Supervisor	Bildende Kunst Birgit Klauck	
Language	English	
Participants	30	
Place	Köpenicker Str. / Schlesische Str. / architecture building	
Time	tba, see website	
First Session	tba, see website	
Registration	Moses	
Website	https://blogs.tu-berlin.de/adip_klauck/	

Fictions Fantasies Fabulations

'Fictions, Fantasies, Fabulations' offers a frame for an ongoing open examination and exploration in spatial and artistic practices. This semester with a focus on „Köpenicker Strasse - Schlesische Strasse“.

We will turn our imagination to fictions, speculations and 'what ifs'

- fictions as a means to envision an alternative future for the neighborhoods around Köpenicker and Schlesische Strasse,
- speculations as a critique of the status quo,
- 'what ifs' as invitation to explore the impossible in order to move our limits.

Possible goals are critical reflections, speculative interventions or other fictitious spatial practices and narratives. The means for these are imagining, discussing, mapping, drawing, writing ...

For more information go to: https://blogs.tu-berlin.de/adip_klauck

This seminar is offered in a workshop format, i.e. we organize joint workshops and 3 to 4 walks on site. The face-to-face workshops take place on Wednesday afternoons.

Compulsory Modules

Design Studios
Fundamental Modules

Compulsory Optional Modules

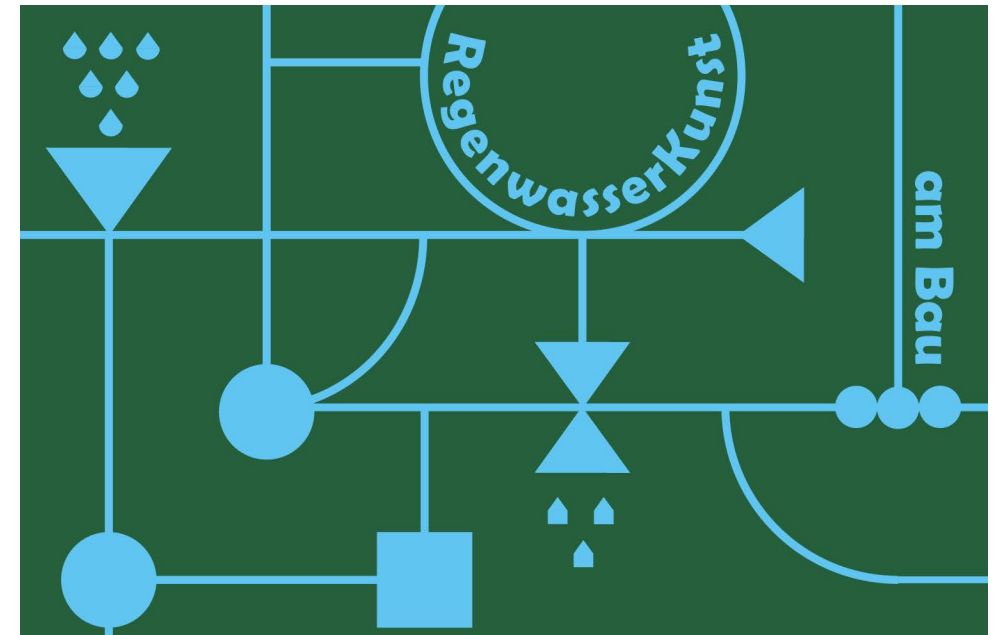
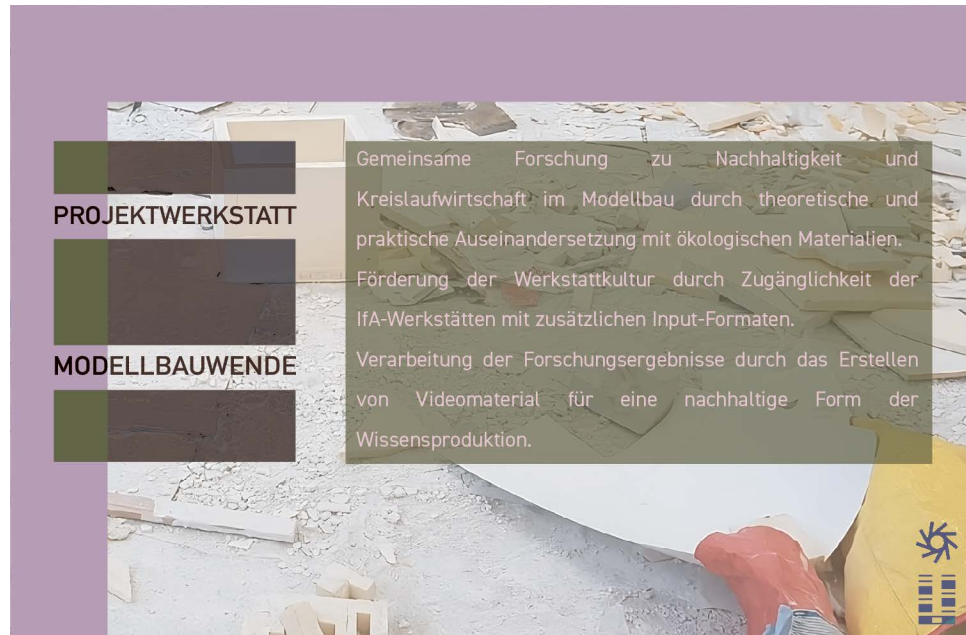
Optional Modules

Projektwerkstatt Modellbauwende

Module	Modellbauwende - nachhaltiger Modellbau	6 CP
Chair Supervisor	Projektwerkstatt Modellbauwende Blanca Heinrich, Lucas Pichler	
Language	German	
Participants	30	
Place	Werkstätten des IfA	
Time	Tue, 14:00 -16:00	
First Session	23.04.24	
Registration	by 16.04.2024 via Mail	
Website	https://www.nbl.berlin/	

RegenwasserKunst am Bau

Module	Dreidimensional Gestalten	6CP
Chair Supervisor	Bühnenbild_Szenischer Raum – Modell+Design Annette Müller / Robert Niemann	
Language	German, English	
Participants	10	
Place	ACK 484	
Time	Mo. 10-18 (maybe compact workshop)	
First Session	09.04.2024, 10:00	
Registration	info@modellunddesign.de	
Website	https://www.modellunddesign.de/	



Walk-along the City Qualitäten von Stadträumen erforscht?!

Module	BUA X-Student Research Group	6 CP
Chair Supervisor	Planungs und Bauökonomie / Immobilienwirtschaft in Kooperation mit Center for Metropolitan Studies (Fakultät I) Marie Duchêne, Aylin Akyildiz	
Language	German	
Participants	15	
Place	EB 315	
Time	tba, first session: Zoomlink	
First Session	18.4.24, 10:00	
Registration	at the first session	
Website	BUA X-Student Research Group	

Denkmalwerte - Denkmalkritik

Module	Denkmalwerte - Denkmalkritik	3 CP
Chair Supervisor	Historische Bauforschung und Baudenkmalpflege Prof. Dr. Jörg Haspel	
Language	German	
Participants	30	
Place	A 052	
Time	Mo. 10:15-13:45	
First Session	15.04.2024	
Registration	first session	
Website	tu.berlin/hbd	



Maßnahmen der Denkmalerhaltung und Denkmalrestaurierung bilden eine Voraussetzung zur kontinuierlichen Denkmalüberlieferung und Denkmalvermittlung. Sie leisten auch unmittelbar und vor Ort einen spezifischen Beitrag zur Denkmalinterpretation und zum Denkmalverständnis. Die Veranstaltung will Denkmale sehen lehren bzw. sensibilisieren für die Wirkung von Denkmalpflegemaßnahmen auf die Wahrnehmung von Denkmälern und ihren Denkmalwerten. Ausgehend von internationalen Grundsatzpapieren der Konservierung und Restaurierung von Denkmälern werden historische Strategien und Konzepte der Denkmalpflege-theorie und der Denkmalpflegepraxis einschließlich der Interpretation und Präsentation von Denkmälern behandelt und durch Ortstermine an regionalen Fallbeispielen aus Berlin und dem Umland illustriert. Vergleichend vorgestellt und diskutiert werden alternative Konzepte der Denkmalsanierung und -restaurierung im Spektrum konservatorischer Grundhaltungen zwischen Leitbildern einer „schöpferischen Denkmalpflege“ oder „analytischen Denkmalrestaurierungen“, dem Prinzip des „conserve-as-found“ bzw. „non toccare“ und dem Ideal eines „unsichtbaren Denkmalarchitekten“ bis hin zum Paradigma der „Denkmalerhaltung durch Erneuerung“, dem „Weiterbauen am Denkmal“ und dem Berufsbild vom Konservator als „Change Manager“.

Hochbaukultur aus Deutschland – Tragwerke

Module	Kolloquium Konstruktiver Ingenieurbau – Verbundstrukturen 3 CP
Chair Supervisor	Tragwerksentwurf und -konstruktion (IfA) zusammen mit Entwerfen und Konstruieren – Verbundstrukturen (IfB) Prof. Dr.-Ing. Volker Schmid, Prof. Dr.-Ing. Kerstin Wolff
Language	German
Participants	30
Place	Gustav-Meyer-Allee 25, Gebäude 13b, Hörsaal B
Time	Tue, 18:00, see website
First Session	23.04.2024
Registration	ISIS
Website	https://www.tu.berlin/ek-verbundstrukturen



Seminar: Hochbaukultur aus Deutschland - Tragwerke

Im Rahmen einer Vortragsreihe werden aktuelle Projekte mit Tragwerksschwerpunkt vorgestellt.

Vortragende werden in diesem Semester unter anderem sein:

- Christian Kaufmann, Kaufmann Bausysteme, Innovativer Holzmodulbau
- Heinz Lars, CRP, Pergamon Museum
- Christoph Gengnagel, Bollinger Grohmann, Turm Bauhaus Archiv
- Martin Elze, Happold, Edge Südkreuz
- Boris Reyher, sbp

Parallel zum Besuch der Vortragsveranstaltungen erfolgt gruppenweise die Analyse von ausgewählten Referenzprojekten mit anschließender Präsentation.